

## Systems and accessories for modern livestock production



Specialists since 1955



## Customised projects

OMV is a leading-edge company specialised in offering a complete service of design and installation of modern, customised livestock facilities.

The pivotal point of the company philosophy is that each and every project must be tailored to fit the customer's specifications and all types of environmental conditions, and provide the animals with an ideal habitat on farms with as few as 50 head or as many as 1000.

## Planning

As the worldwide trend of development in dairy farming shows a constant growth in farm size, often doubling or tripling the number of head, it becomes increasingly important to carry out the health controls required by laws and regulations that are increasingly restrictive. These factors, added to the increase in the costs of structures, underscore the need for serious and competent planning and design that contemplate and satisfy potential farm developments over the medium and long term.

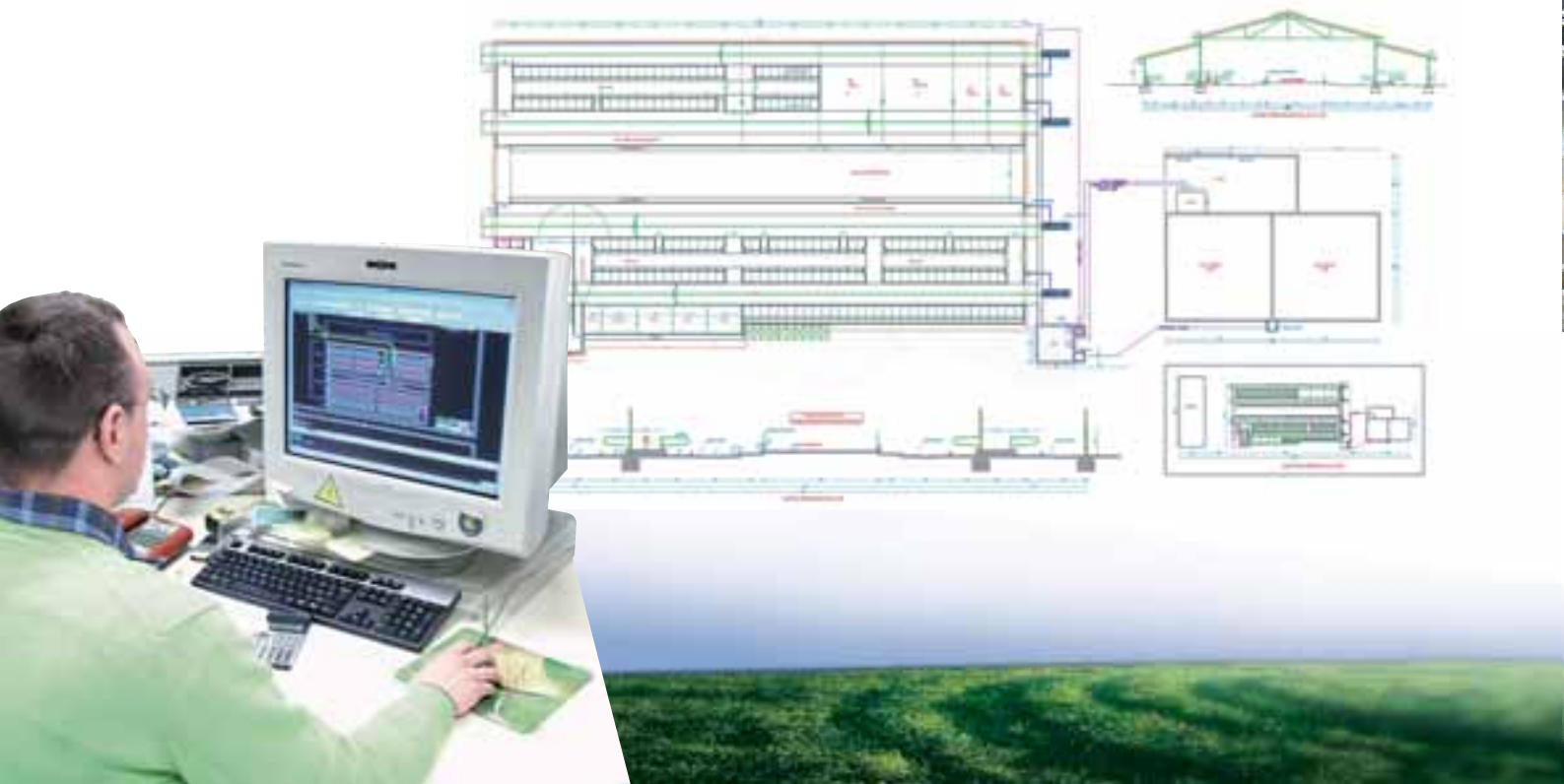
Nothing is more risky than investing in structures that are inefficient due to erroneous planning and design. Too often, planning that does not allow for the possible integration of new structures or equipment turns out to be the cause of enormous problems down the road.

## Extensive experience

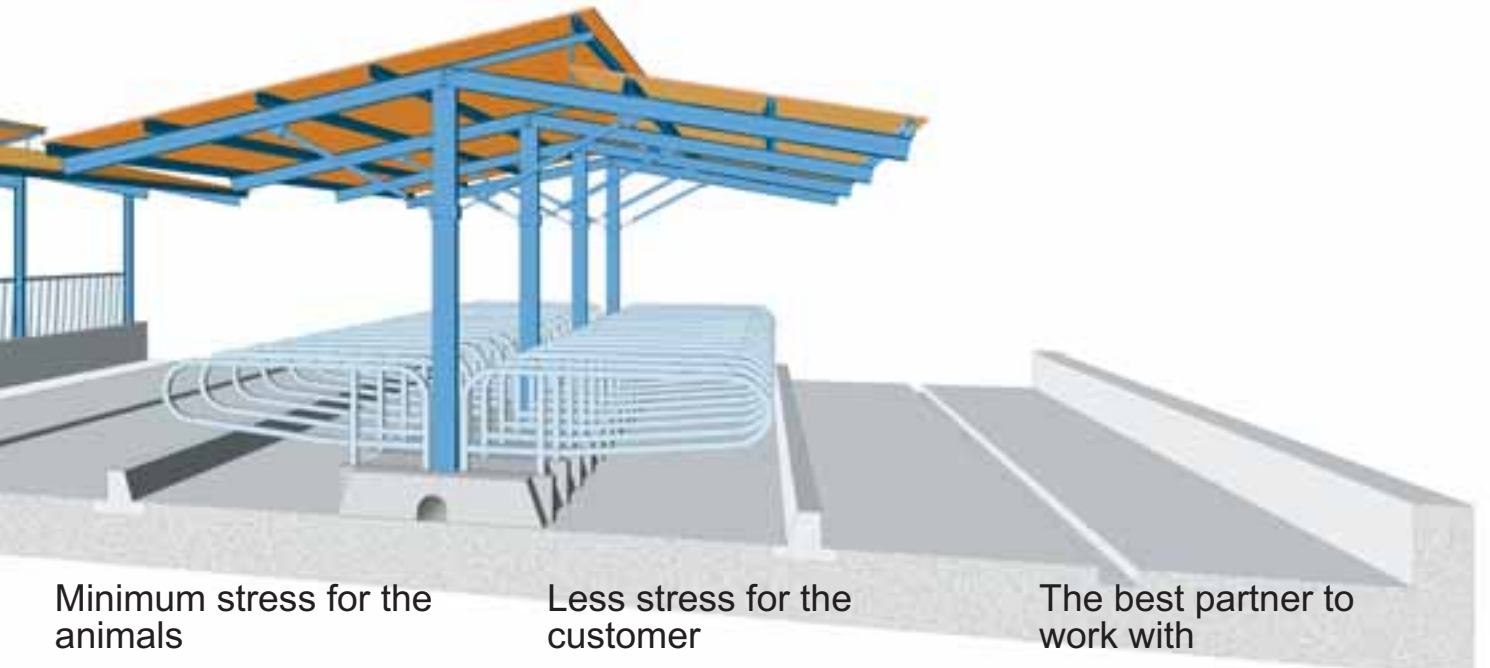
The staff of technicians at OMV have always focussed on these issues, and in many cases have designed and developed new concepts and innovative structures and equipment able to prevent and resolve all the specific problems that high-output milk cow breeding entails today.



Systems and accessories for modern livestock production







### Minimum stress for the animals

Perfect design and engineering can only result from solid know-how in the livestock industry. OMV's design and engineering staff benefits from the contribution of professionals who are experts in livestock breeding, with in-depth knowledge of the needs, the habits, and the preferences of high-output cows. This means that OMV is able to create the ideal habitat for any type of farm, location, and climate, with housing that is ideal in terms of comfort, health, and cleanliness, ensuring less stress for the animals and consequently higher profits for the farmer.

### Less stress for the customer

With the operational capacities of OMV, each installation grows according to schedule, more rapidly and problem-free, meaning much less stress for the customer. In addition to structure design, supply, and installation, OMV offers a series of services ranging from assistance in selection to negotiation of support supplies, works supervision, and turn-key delivery of the entire installation.

### The best partner to work with

OMV's extensive experience means that we can formulate solutions for:

- renovating old housing with more efficient equipment
- expanding the farm from 60 to 120 head
- building a farm for thousands of head from the ground up
- constructing systems for manure treatment and storage.



*I'll be right there!*



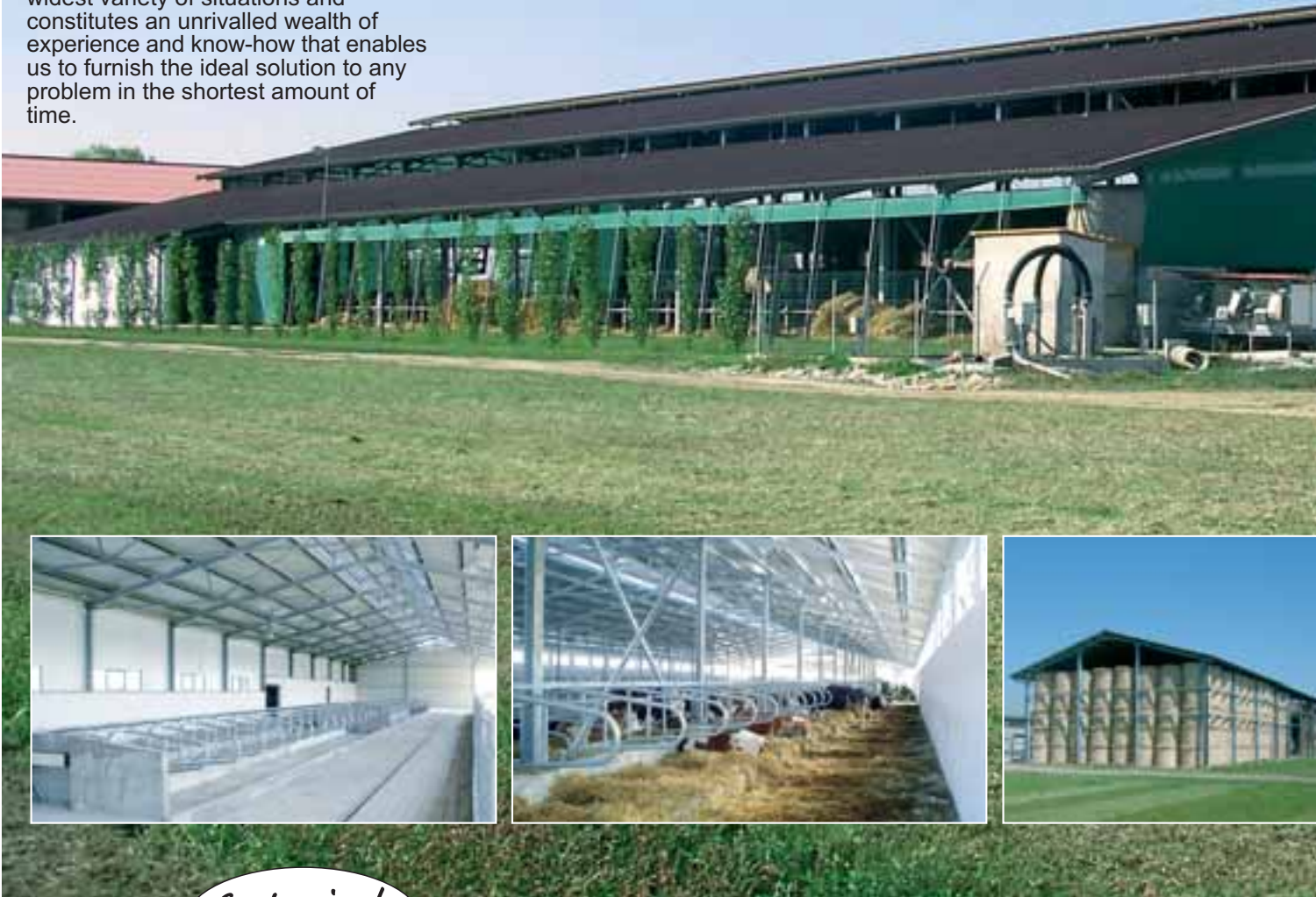
tel. +39 0522 831360



# Structures

OMVE metal structures represent the fastest and most flexible system for creating new housing or recovering existing stabling facilities.

The excellent preparation of our staff makes it possible to find solutions in the widest variety of situations and constitutes an unrivalled wealth of experience and know-how that enables us to furnish the ideal solution to any problem in the shortest amount of time.



*Customised projects!*



Cathedral polanceau



Industrial structures



Portal pitch



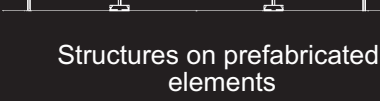
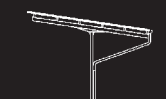
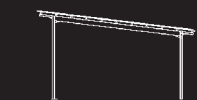
Structures for pig







Prefabricated sheds



Single-pitch structures

Structures on prefabricated elements



## Stall partitions

Rest and respect for the well-being of your livestock are the basis for the creation of these rugged elements in galvanised steel for dividing stalls and optimising access. OMV separators are sized for cubicles with beds of straw, sawdust, mattresses and rubber mats.



*They're happy,  
so I'm happy.*



**California Comfort model**  
Designed for fitting on reinforced concrete elements, ideal for all types of stalls.



**Canada Comfort model**  
Rugged construction made with Ø 2" tube and Ø 4" columns. Ideal for small spaces.



**Germania Comfort model**  
Made of Ø 2" tube, this is an economical model, simple and functional, that adapts perfectly to any breed of cattle.





## Headlocks

### Anti-suffocation-Lifesaving model

An exclusive system developed from the experience with traditional yoking systems and the collaboration of our customers:

currently the only one on the market, this is the headlock system with the largest swing arm opening to facilitate the entry and exit of the cow's head.

### Plus model

Functional and quiet, this model is ideal even for cows larger than average. Increased swing arm opening. Yoking system with opposed ratchets.



### Calf model

Created for calves and heifers for rearing with the same concept and comfort of the adult animals. Adjustable in height and width.



Detail of the pass-through element.

### Liberty model

Based on a French concept, this model is original and versatile for all types of cows, economical, made in lengths of 5 metres each (6, 7, 8 head).



Silencer

All OMVE headlock systems come with single yoking.



## Cleaning systems

### Flap scrapers

Designed and constructed to recover space and prevent floors from becoming dangerously slick. Over 20 years of experience have made it possible for our models to evolve in step with the evolution of the environments in which they are installed.

*When they're clean,  
they're healthier.*



Over the years, OMVE has installed more than 1000 scrapers from 2 to 20 metres width throughout Europe, receiving the highest approval levels for their functionality.



### Eco scrapers

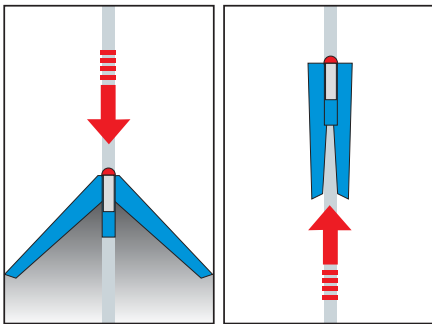
with mechanical operating sled.



**Scrapers for paddock alleys** with blades that are raised automatically in the return phase, built for alleys up to 17 metres.

### Butterfly scrapers

With hinged wings, they are ideal for alleys without straw for animals for rearing. On the return trip, these scrapers close the wings at the centre, avoiding creating mobility problems for the animals.



### Cable scrapers

during the discharge phase.





### Scrapers for rubber floors

The OMVE range also includes flap scrapers specifically designed for rubber floors, featuring all the technical measures necessary for safeguarding the mats.



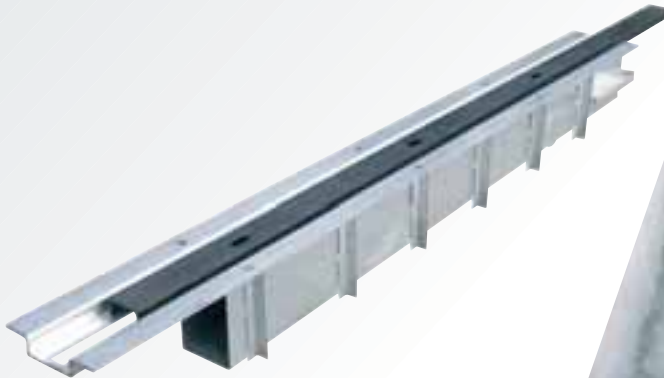
Flap scraper in the resting zone.



Flap scraper during cleaning.



Flap scraper in the phase of discharge into tank.



**R.A.S. concealed unit** with galvanised box to be positioned below the scraper running surface.



**R.S.V. drive assembly** with self-lubricating cylinder and guides in polyzene.



**Hydraulic power units** for scrapers with automatic valve and electric motors up to 10 HP.



## Manure collection and treatment

**High output manure separator,** ideal for manure containing straw.

*If you add it all up, it's worth it!*



**Pump for manure transfer and treatment** in the pre-spreading pit.





## Equipment

Our accessories and equipment for cow barns are the result of years of experience and ongoing dialogues between our technicians and animal husbandry experts. Each solution is designed and constructed to ensure perfect functionality and the most efficient use.

This means that these products all respond fully to the characteristics for which they are installed.

### Gates, Enclosures, and Barriers

Rugged galvanised and welded structures equipped with support columns.



Divider gates and application of accessories on the passageways.



Detail of the return from the milking parlour



Pen for calves for rearing



Counterweight barriers



Enclosure for manure pit



Detail of intermediate passage with drinker



# Equipment

## Drinkers



F14 - Constant level drinker with built-in float. Capacity 6 litres. Drain plug for cleaning.



Euro 10 - Drinker with water inlet from above or below. Equipped with high flow rate valve. Drain plug for cleaning.



F16-Drinker in galvanised steel and stainless steel. Capacity: 50 litres Lengths: 0.70 - 1 m



F18 - Drinker in galvanised steel and stainless steel. Capacity: 80 litres Length: 1 m



Everything you need!



F40 - Tiltable drinker with guard. Maximum capacity 140 litres. Lengths: 1 - 1.5 - 2 m

### Foot trough

S model foot trough

The honeycomb shaped surface enables better disinfection of the animals' hooves.

Dimensions: 90 x 220 cm  
Height: 15 cm  
Capacity: 200 litres



VT80 - Drinker in PVC. Capacity: 100 litres. Length: 1 m



L100 - Drinker in anti-freeze PVC. Capacity: 80 litres. Length: 1 m



### Electric rotary brushes

Surface cleaning of the coat removes parasites and improves subcutaneous blood circulation with a pleasant massage, consequently increasing the animal's well-being. Dimensions: 50x100 cm.



Single



Double

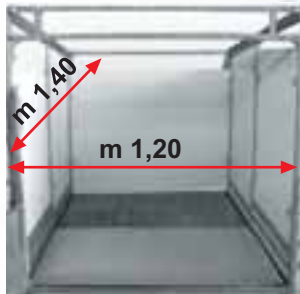


## Cages for calves



### Super CAGE model

Raised weaning cage for calves up to 50-60 days.  
 Dimensions: 1.20 x 1.40 m  
 Possible composition in continuous battery up to 5 cages and more.  
 Constructed in square tube with floor in galvanised grating, self-discharging, walls in water-repellent plastic laminate 6 mm thick, roof in ecological fibre cement or polyurethane panel.  
 Front gate in galvanised steel, complete with colostrum bottle, bucket for milk, and stainless steel feed trough.



*Patented*

### Super JOLLY model

Weaning cage for calves up to 90-100 days.  
 Dimensions: 1.20 x 1.40 m  
 Possible composition in continuous battery up to 5 cages and more.  
 Constructed in square tube with front flooring in self-cleaning grating, lowered rear bed for holding straw in galvanised steel; walls in water-repellent plastic laminate 6 mm thick. Rear door with tilt opening to permit cleaning and disinfection of the bed by moving the calf to the front part of the cage.  
 Roof with slide-opening polyurethane panel. Front gate in galvanised steel, complete with colostrum bottle, bucket for milk, hay rack, and stainless steel feed trough.



## Weaning stalls

**Calf weaning stall** in 4-unit battery (other compositions possible).  
 Dimensions: 380x155-175-190  
 Suitable for calves up to 50-60 days.  
 Frame in steel hot-dip galvanised after machining, with upper hook for lifting.  
 Sides and roof in polyurethane panel covered with white/grey pre-painted galvanised sheet.

Front gate complete with:

- single automatic yoke
- bottle and bucket holder
- hay rack + feed trough



**Post-weaning stall** for calf rearing.  
 Suitable for 6 calves up to 90-100 days.  
 Dimensions: 330 x 330 cm  
 Frame in steel hot-dip galvanised after machining, with upper hook for lifting.  
 Sides and roof in polyurethane panel covered with white/grey pre-painted galvanised sheet.

Front element complete with:

- gate with vertical posts
- gate with 6 head of anti-suffocation rack
- continuous linear feed trough
- constant level drinker



## Weaning stalls

**Bale feeders**  
 Structures in galvanised steel with collection trays.  
 Roof in corrugated galvanised sheet.  
 Equipped with coupling for the tractor lift to facilitate moving.



Self-locking model  
 Dimensions:  
 2 x 1.65 m  
 Weight: 280 kg



Eco model  
 Dimensions:  
 2.05 x 1.65 m  
 Weight: 200 kg



Life-saver model  
 12 places  
 with automatic yoking  
 Dimensions:  
 2.05 x 2.10 m  
 Weight: 450 kg



## Prefabricated elements

*No excavation!*

Building structures without foundations is possible using self-bearing prefabricated elements in vibrated reinforced concrete.



## Tie-stall housing

### Hydraulic manure management system vertical "Talpa" model

Manure removal system with hydraulic press system complete with 7.5 or 10 HP power unit, 380/660 three-phase, constructed and tested to resolve the problem of manure storage at distances of approx. 50 m from the collection site and in conditions of low temperatures outside the barn.



### Mechanical propulsion unit

GPO model designed for piping-side installation. Equipped with galvanised inspection hood, it is ideal for manure transfer in barns up to 40 m.



Motorisation 2 and 3 HP.



### Hydraulic manure drive unit

GPI model  
Positioned laterally to the belt drive channels, it is ideal for lengths up to 90 m.



### "Talpa" vertical hydraulic unit

Through underground piping, it pushes the material towards the collection point situated at max. 50 m distance.







1 – Manure removal inside the barn by means of comb blades in steel or cast iron.



2 – Hydraulic unit for conveying towards the "Talpa" unit (3).



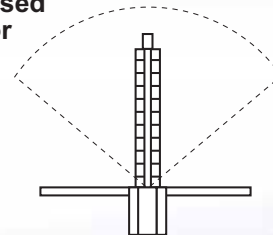
4 – Manure collection point with expulsion pipe height 5 m.



EGN model  
Elevator with 180° swivel  
for manure piling.  
Belt lengths 6 – 8 – 10 metres



Orientable closed  
circuit elevator  
Lengths up to  
10 metres



## Production programme

In addition to the livestock equipment division, OMVE operates in other production sectors:

- Ball joints and accessories for irrigation
- Clamps and livestock farming accessories

## Guided tour

Come pay us a visit. In addition to getting a first-hand look at the quality of our work, we will take you to visit some of the most significant installations in order to better persuade you of our technical expertise and the possible design alternatives.



## Close to you for any need

Our geographical location in the heart of the Po valley enables OMVE to be close to you quickly and at all times.



### Officine Meccaniche Vezzani E. S.r.l.

42016 Guastalla (RE) Italy - Via Einaudi, 9-9/A

► Tel. +39 0522 831360 - Fax +39 0522 831007

E-mail: [zootecnia@omve.it](mailto:zootecnia@omve.it)

[www.omve.it](http://www.omve.it)



The company today is situated on an area of more than 10,000 square metres with offices, production facilities, and warehouses.

